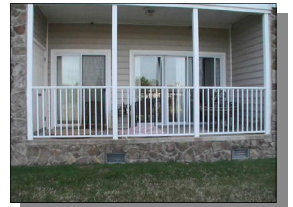
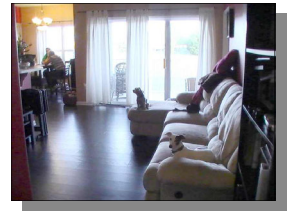
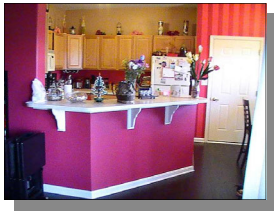


# 3901 N. Sagamore Drive, Milford - \$128,000

## Hearthstone



- Bedrooms: 2
- Bathrooms: 2
- Garage: Attached, 1-Car
- Style: Condominium
- Living Area: 1,016 Square Feet +/-
- School District: Milford
- 2011 Taxes: \$640
- Approximate Age: 6
- Heat: Electric, Forced Air
- Cooling: Central Air

***For information by e-mail: [Karen@RashTeam.com](mailto:Karen@RashTeam.com)***

*This first-floor end-unit condominium has 2 bedrooms, 2 bathrooms, and an attached 1-car garage. You'll love the Kitchen's design and appliances! From the Dining Room, Living Room, and Porch you'll have a view of the open space in back. The dishwasher and water heater are both new. Living in Hearthstone is all about having an easy, comfortable lifestyle, with a quick drive to the beach. Are you ready to take a look? We've posted over 35 pictures on the website.*

*Go to [RashTeam.com](http://RashTeam.com) to see them all, then call me at 302-363-3947 for your showing.*

***(302) 363-3947***

***Karen Barnes Sells  
The Greatest Homes On Earth!  
[www.RashTeam.com](http://www.RashTeam.com)***



Karen Barnes

Keller Williams at the Beach, 19354C Coastal Hwy, Rehoboth Beach, DE (302) 360-0300

While believed correct, no information herein is guaranteed and is subject to buyer verification.  
Living area sq. ft. based on seller's information, actual area may differ. Land dimensions and area are subject to survey.  
Availability and price are subject to change without notice.  
Keller Williams® Realty offices are independently owned and operated.

